

BLACK RIVER & WESTERN RAILROAD

202

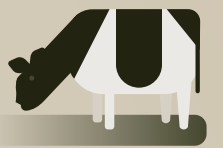


ROCKAFELLOW RIVER RD
PENSNSYLVANIA AVE
RIVER MILLS RD
RIVER AVE
MAIN ST

NS LEHIGH LINE

31
BROAD ST
MAIN ST
CENTRAL AVE
CHURCH ST

THREE BRIDGES



FLEMINGTON

12



JOHANNA FARMS RD

COPPER HILL
COPPER HILL RD
EVERITTS RD



HOGTOWN



PUMPKIN JUNCTION

TOAD LN

RINGOES

BOSS RD



BOWNE STATION RD

BOWNE

MT AIRY RD

HAMP RD

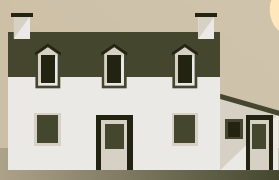


BLACK RIVER & WESTERN RAILROAD

From the river town of Lambertville to the railroad town of Three Bridges, BR&W has been connecting communities in Hunterdon County since 1965.

Passenger trains and special events operate between Flemington, Bowne throughout the year. Holiday events, pumpkin trains, railfan specials and more: there's always something happening at BR&W!

202

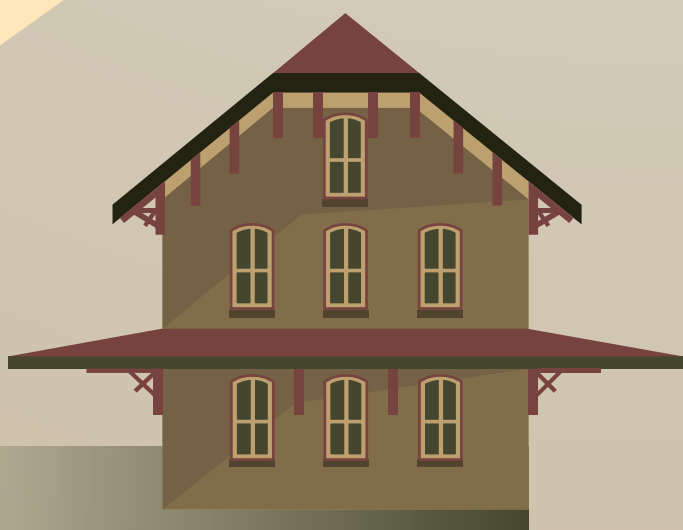


RT 29

HOLCOMBE JIMISON FARMSTEAD

CORYELL ST

BRIDGE ST



LAMBERTVILLE

- Major Road
- In-service Railroad
- Out-of-service Railroad
- Public Station
- Grade Crossing or Bridge
- Attraction